

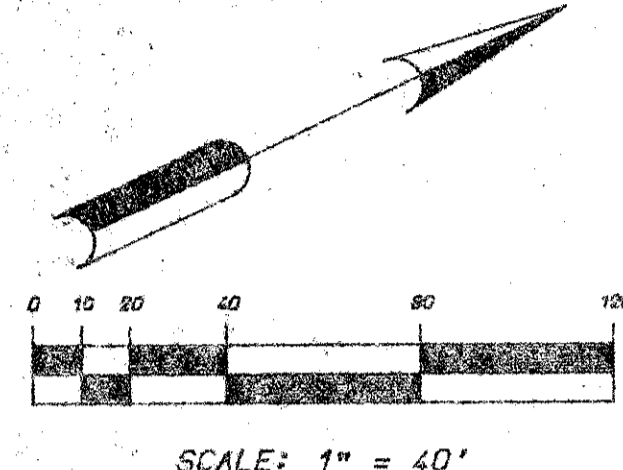
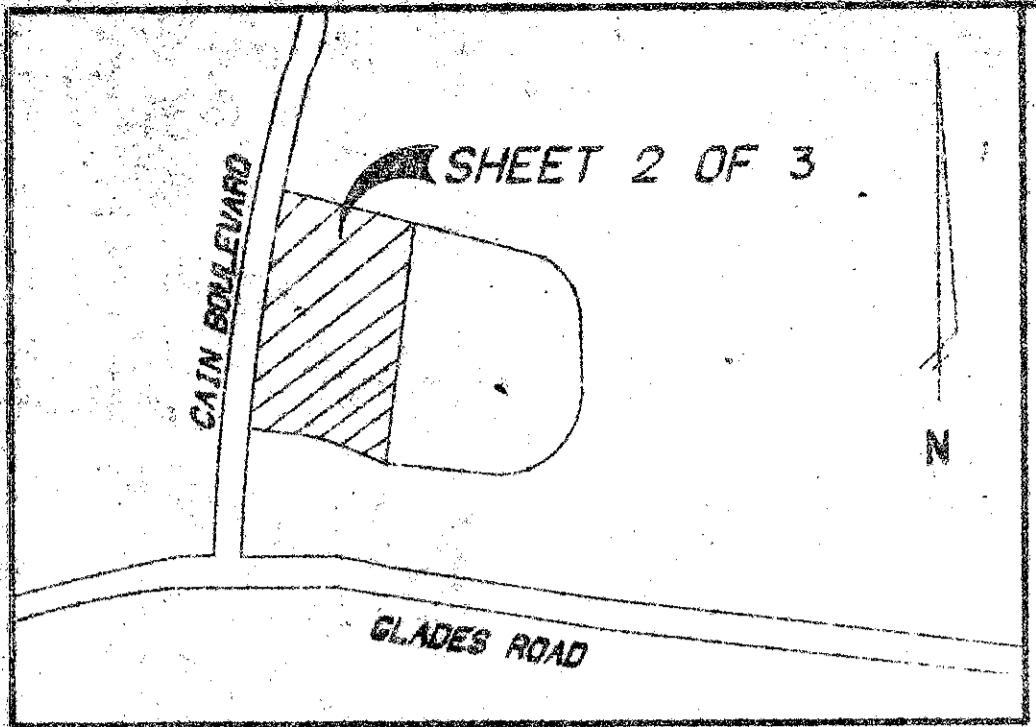
54/22

22

MISSION BAY P.U.D. PLAT NO. 2

IN SECTION 13, TOWNSHIP 47 SOUTH, RANGE 41 EAST, PALM BEACH COUNTY, FLORIDA, BEING A REPLAT OF A PORTION OF TRACTS 9, 10, 23, 24, 33, 34, 63 & 64 OF THE PLAT OF FLORIDA FRUIT LANDS COMPANY'S SUBDIVISION NO. 2 OF SECTION 13-47-41, AS RECORDED IN PLAT BOOK 1, PAGE 102 OF THE PUBLIC RECORDS OF PALM BEACH COUNTY, FLORIDA

SHEET 2 OF 4 MAY, 1986



DRAWING NUMBER

DRAWING NUMBER

DRAWING NUMBER



SURVEYOR'S NOTES

- 1.) ALL P.R.M.'s BEAR THE REGISTRATION NUMBER 3864 SHOWN THUS - P.R.M. UNLESS OTHERWISE NOTED.
- 2.) ALL P.C.P.'s (PERMANENT REFERENCE POINTS) SHOWN THUS - P.C.P.
- 3.) THE BEARINGS SHOWN HEREON ARE BASED ON A BEARING OF N.00°42'39"W. ON THE EAST LINE OF SECTION 13-47-41.
- 4.) D.E. - INDICATES A DRAINAGE EASEMENT.
- 5.) U.E. - INDICATES A UTILITY EASEMENT.
- 6.) ROADWAYS WITHIN THE PLAT OF FLORIDA FRUIT LANDS COMPANY'S SUBDIVISION NO. 2 OF SECTION 13-47-41 WERE ABANDONED PER RESOLUTION NO. R-84-1932, AS RECORDED IN BOOK 4438, PAGE 1770-1773, PUBLIC RECORDS OF PALM BEACH COUNTY, FLORIDA.
- 7.) NO BUILDINGS OR ANY KIND OF CONSTRUCTION SHALL BE PLACED ON UTILITY OR DRAINAGE EASEMENTS.
- 8.) THERE SHALL BE NO TREES OR SHRUBS PLACED ON UTILITY EASEMENTS WHICH ARE PROVIDED FOR WATER AND AND SEWER USE OR UPON DRAINAGE EASEMENTS.
- 9.) LANDSCAPING ON OTHER UTILITY EASEMENTS SHALL BE ALLOWED ONLY AFTER CONSENT OF ALL UTILITY COMPANIES OCCUPYING SAME.
- 10.) T.D.E. - INDICATES A TYPICAL DRAINAGE EASEMENT. SEE DETAIL 'A'.
- 11.) WHERE UTILITY AND DRAINAGE EASEMENTS INTERSECT, DRAINAGE EASEMENTS SHALL TAKE PRECEDENCE.
- 12.) L.A.E. - INDICATES A LIMITED ACCESS EASEMENT.
- 13.) D - DENOTES CENTRAL ANGLE.
- 14.) A - DENOTES ARC LENGTH.

DETAIL 'A'

WATER MANAGEMENT AND RECREATION TRACT NO. 13 DIMENSIONS ARE TYPICAL UNLESS OTHERWISE NOTED. P.B. 53, PG. 112-120

SUBDIVISION	MISSION BAY
BOOK	54
PAGE	22
FLOOD ZONE	B
FLOOD MAP	100B
QUAD	4C
ZONING	33-434
SHIP CODE	33-434

ADD. BY TP
CHECKED BY BT
13/47/41
MISSION BAY #2
MICHAEL T. NOBLE, L.S., P.E.
LAWSON, NOBLE & ASSOCIATES, INC.
ENGINEERS PLANNERS SURVEYORS
BOYNTON BEACH, FLORIDA
FOR SITE PLAN APPROVAL SEE TRACT E